

genmab



cepezed





# genmab

Mid 2018 biotech company Genmab took its new premises at the Science Park Utrecht into use. The new head office of Genmab, which has branches in Copenhagen and Princeton - New Jersey, is an integral design of cepezed and cepezed interior. The new building has been designed on the basis of an open work culture and intensive interaction, also with external parties. With a high sustainability score and ample daylighting, the new building offers a comfortable, healthy and inspiring (work) environment for employees and visitors.

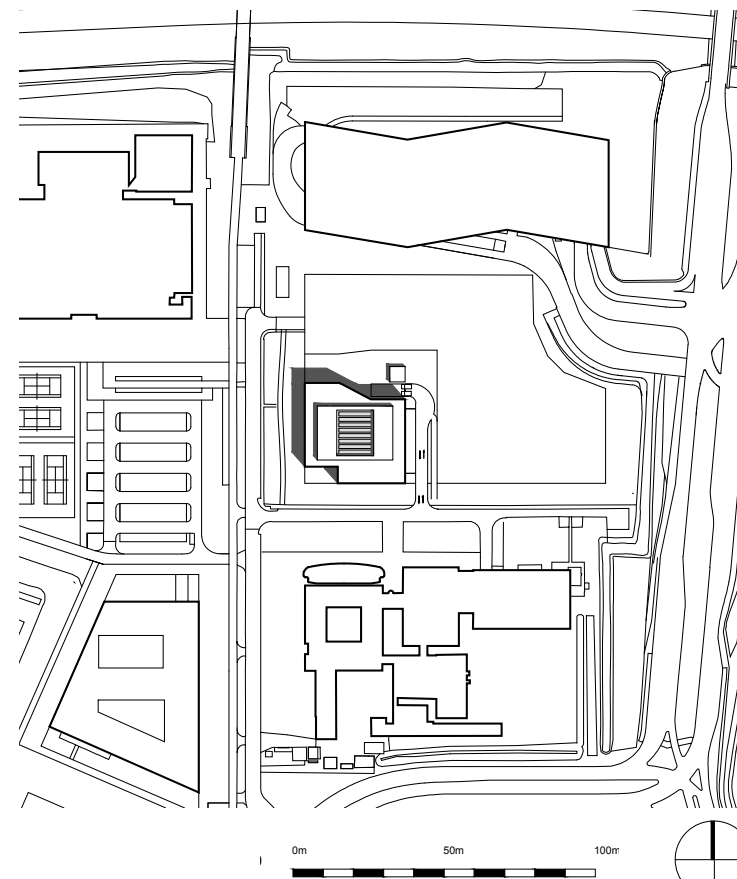
Genmab is a internationally operating biotech company that develops therapeutic antibodies for the treatment of cancer. Over the last years, the company has grown substantially, leading to the need for new premises. Its Scandinavian origins called for a special focus on design. In addition, the new-build has been seized as an opportunity to give the firm more visibility, to increase interaction between the employees and to collaborate more effectively with external partners. The building was also intended to become a calling card to attract top researchers. cepezed and cepezedinterior were responsible for the design.

The new Genmab is a striking, cleanly styled and detailed building located directly on the main access road of the Utrecht Science Park. The programme comprises offices, laboratories and an extensive range of supporting functions such as a meeting centre, auditorium, science café and restaurant. The building has an open structure with large spans and long sight lines. Above ground, it consists of two five-storey bays positioned out of alignment with each other, and an atrium in between. Underground there is a parking garage that takes up the entire footprint.

The building is as compact as possible. The alignment of the two bays contributes to a good fit with the location. The facilities programme with the meeting centre, auditorium and café, but also a gym, bicycle parking, storage areas and waste rooms, has been mainly housed on the ground floor. The floor slab of the atrium is situated on the first floor and has the character of a plaza. Surrounding this are other supporting functions such as a coffee bar and an open kitchen with front cooking. In the office bay, the meeting spots are situated along the atrium while the fixed workspaces are mainly located along the façades. The upper three storeys accommodate both offices and laboratories. Their gross height is higher, so that the programme here can be flexible: offices can become labs and vice versa.

The bay façades are vertically articulated, and here the frames of the glass components are concealed behind the aluminium external finish of the closed elements. The atrium has completely transparent façades, so that the large open space is prominently in view from the outside and makes a significant contribution to how the building appears to the surroundings. Special elements in the atrium are the large islands, more than eight metres in diameter, which are positioned stepwise and seem to float freely in the space. On the islands there are spots for meeting, discussion and flexible working. One of them functions as a board room and is equipped with hot bent glass walls, a large table with illuminated company logo and a custom-made piece of furniture containing all the climate facilities and the most modern presentation equipment.

The interior is light, uncluttered and stylish, with a great deal of wood and other natural materials used. Corridors are optically widened by allowing their floor finish to continue into the transparent office spaces. In terms of sustainability, the new Genmab has the BREEAM Excellent certificate.



site









Bus Timetable  
Utrecht, Heidelberglaan

Line	Destination	Time
100	Utrecht, Heidelberglaan	08:00
101	Utrecht, Heidelberglaan	08:15
102	Utrecht, Heidelberglaan	08:30
103	Utrecht, Heidelberglaan	08:45
104	Utrecht, Heidelberglaan	09:00
105	Utrecht, Heidelberglaan	09:15
106	Utrecht, Heidelberglaan	09:30
107	Utrecht, Heidelberglaan	09:45
108	Utrecht, Heidelberglaan	10:00
109	Utrecht, Heidelberglaan	10:15
110	Utrecht, Heidelberglaan	10:30

SPECIAL OF THE MONTH  
Watermelon  
GREEN ICED TEA  
CREAM TO THE SUMMER



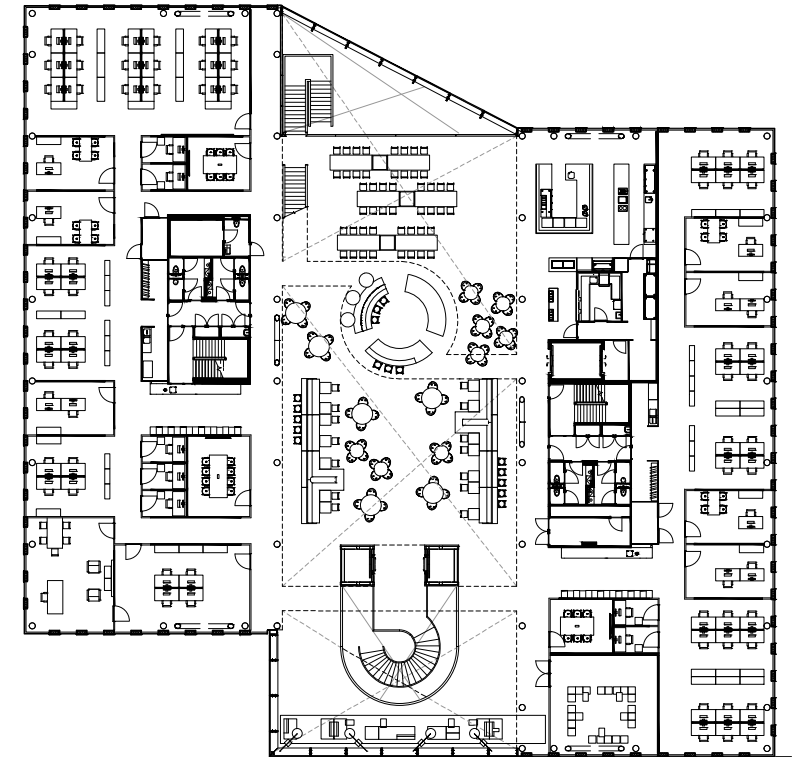
section  
1:300



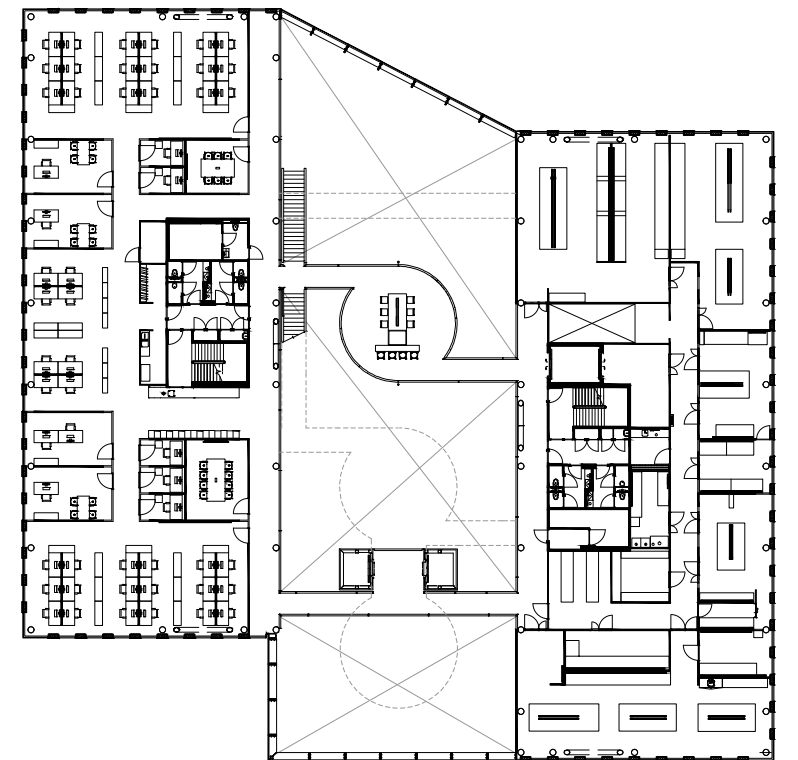




plan drawing  
1:300



ground floor level



first floor level





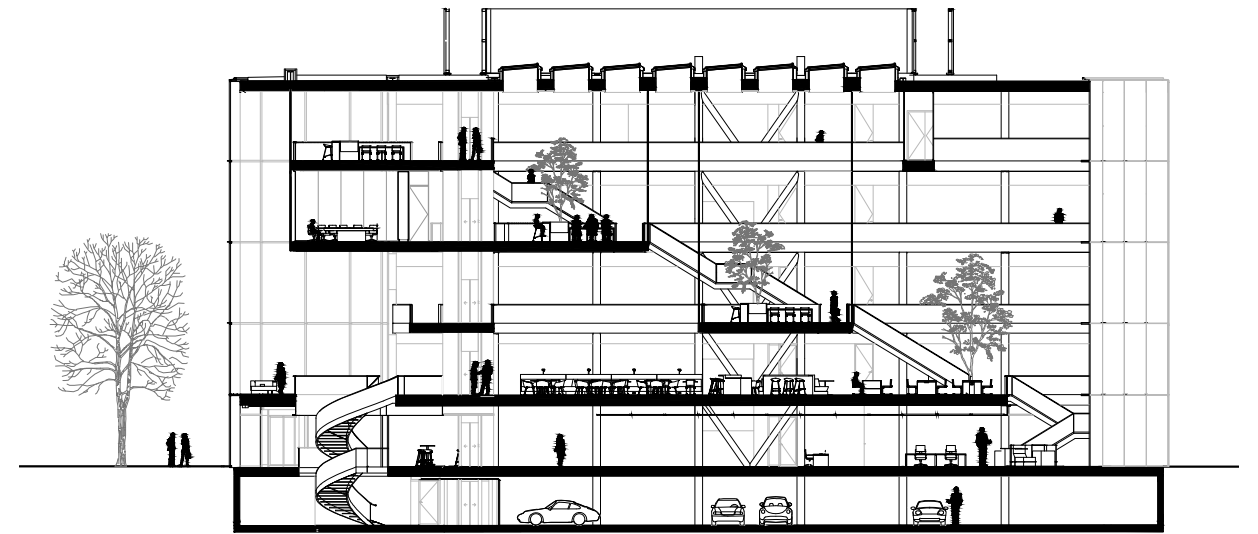








section















# colophon

## project

Genmab research building

## address project

Uppsalalaan 15, Utrecht, Netherlands

## design & build contract

## primary client & user

Genmab, Utrecht

## contracted consortium

Dura Vermeer Vastgoed & Dura Vermeer Bouw midden west

## client interior design

Genmab, Utrecht

## architectural design

cepezed, Delft

## interior design

cepezedinterieur, Delft

## consultant structural engineering

Pieters Bouwtechniek, Haarlem

## consultant mechanical & electrical engineering

dwa, Ede

## consultant building physics & sustainability

dwa, Ede & dwa, Zoetermeer

## consultant fire safety

Peutz, Zoetermeer

## main contractor

Dura Vermeer Bouw midden west, Cruquius

## contractor steel construction

Bentstaal, IJsselstein

## contractor electrical installations

Van den Pol, Amersfoort

## contractor mechanical installations

KlimaatSERVICE, Hardinxveld-Giessendam

## contractor façades

De Groot & Visser, Gorinchem

## project duration | opening

July 2014 – March 2018 | 28 June 2018

## area gfa

11.178 m<sup>2</sup>

## photography

cepezed | Lucas van der Wee

## drawings

architectenbureau cepezed

## note

For high-resolution images and more information about the project, please contact our PR department; +31 (0) 15 215 0000 | [pr@cepezed.nl](mailto:pr@cepezed.nl)

→ Want to know more? View the project page [here](#)

Would you like to discuss this further with us? → Mail [bd@cepezed.nl](mailto:bd@cepezed.nl) or call our business development team at +31 (0)15 2150000

[www.cepezed.nl](http://www.cepezed.nl)